

Protecting Lake Wallenpaupack



Lake
Wallenpaupack
Watershed
Management
District



Lake Wallenpaupack

Lake Wallenpaupack is the most significant recreational water resource in northeastern Pennsylvania. The lake produces jobs, sales, and tax revenues that make it the economic backbone of much of Wayne and Pike Counties. Lake Wallenpaupack provides flood control, wildlife habitat, and recreational opportunities such as swimming, fishing, boating, water-skiing, and snowmobiling.

Lake Wallenpaupack Watershed Management District

The Lake Wallenpaupack Watershed Management District (LWWMD) was created in September 1979 in response to water quality problems in the lake. LWWMD is a multi-governmental, nonprofit corporation that manages the Lake Wallenpaupack watershed and addresses water quality problems. It was the first watershed management district in Pennsylvania. LWWMD's goals are to perform studies to evaluate Lake Wallenpaupack and its watershed, determine pollutant sources of Lake Wallenpaupack, develop a watershed management plan and implement a continuing watershed management and public education program for Lake Wallenpaupack. The LWWMD has received over \$6 million in grant funds for watershed programs and comprehensive water

quality studies since 1981. The grants have also funded the implementation of numerous stormwater runoff and erosion control measures in the Lake Wallenpaupack watershed to help prevent the adverse impacts of watershed activities on water quality, and reduce the amount of nonpoint source pollution entering the lake.

Accomplishments of the LWWMD

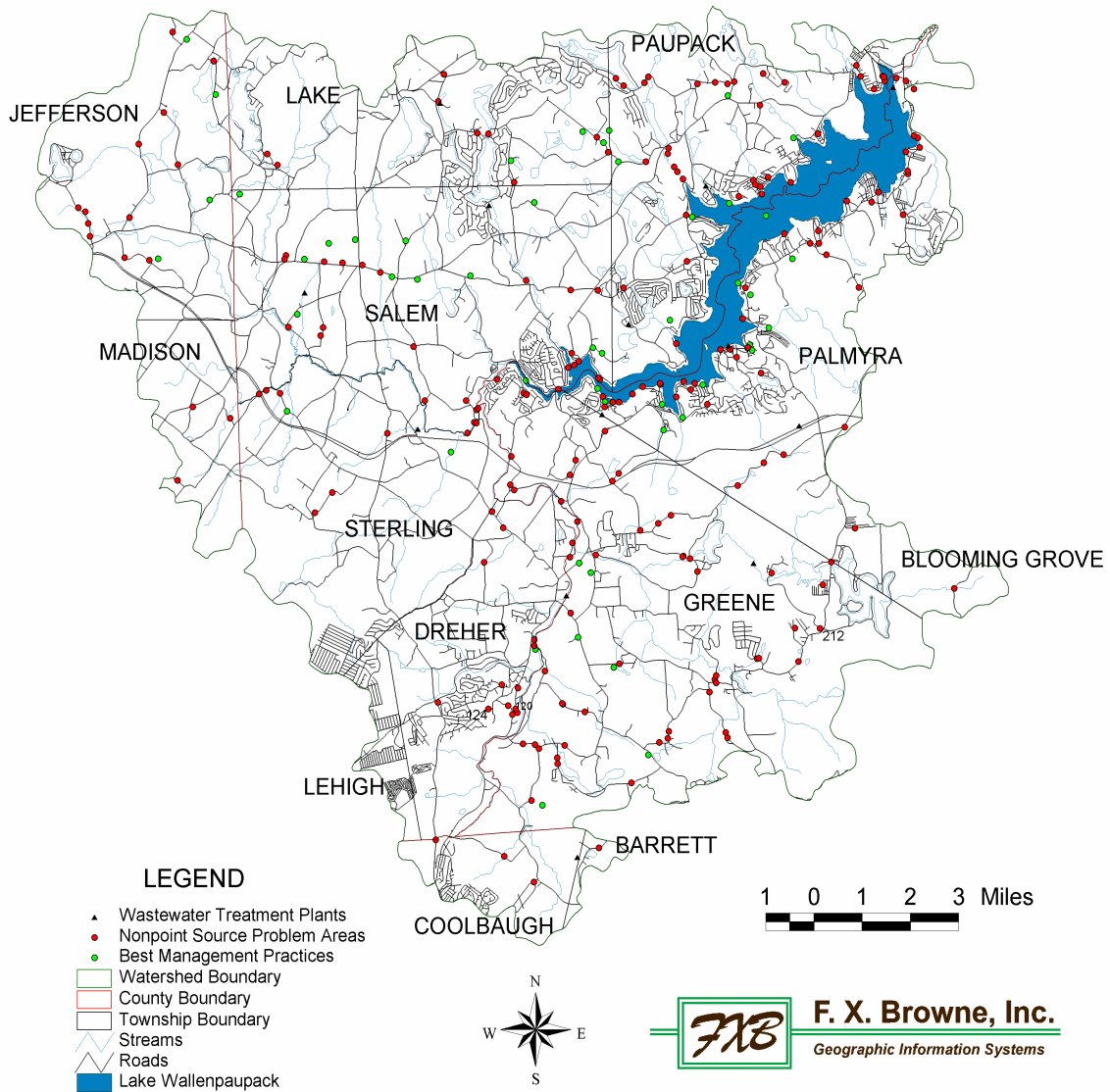
The LWWMD has many accomplishments ---

- Developed LWWMD Slide Show
- Held Agricultural Conservation Days
- Developed a Statewide Environmental Education Curriculum
- Organized a Summer Institute for Science Teachers
- Won 1998 Governors Award for Environmental Excellence
- Installed 52 BMPs throughout the Watershed
- Conducted Watershed Investigations to Identify 209 Problem Areas in the Watershed
- Conducted Numerous Seminars and Workshops
- Developed a Stormwater Management Manual
- And Much More!!

What can LWWMD do to help you?

LWWMD has funding available to help townships, farmers, developers, and homeowners install Best Management Practices (BMPs) on their properties to help reduce nonpoint source pollution entering Lake Wallenpaupack. If you have problems with erosion, flooding, or drainage that may require stormwater BMPs, LWWMD may be able to provide funding. For more information, contact Karen Mandeville at LWWMD by phone at 570-226-3865 or by email at info@lwwmd.org. Visit our website at www.lwwmd.org.

Lake Wallenpaupack BMP & Problem Area Map



What is LWWMD doing to help Lake Wallenpaupack?

To date, LWWMD has installed 52 best management practices (BMPs) in the Lake Wallenpaupack watershed. The BMPs include streambank stabilization, agricultural BMPs, dirt and gravel road projects, and community stormwater BMPs. In addition, LWWMD has identified 209 problem areas in the watershed that are slated for future restoration efforts.

Future Activities

Some of the many future watershed management and lake protection activities of the LWWMD include:

- Funding of stormwater runoff and erosion control measures to assist townships, farmers, and homeowner associations in reducing pollution to area streams and Lake Wallenpaupack.
- Monitoring of streams to determine the amount of pollutants entering Lake Wallenpaupack. The last study of pollutant loadings to the lake was performed 20 years ago.
- Updating the existing watershed management plan to incorporate new pollutant loading and water quality data and to incorporate new principles and methods of controlling stormwater runoff and erosion.
- Conducting educational workshops for engineers, planners, citizens and elected officials. The workshops will consist of Low Impact Development-Stormwater Management, Ecosystem Restoration and Homeowner Practices. Revising the 20 year old stormwater management ordinance to reflect new stormwater management policies and principles.

LWWMD Board of Directors

Mary Ann Hubbard, Chairman, Pike County Supervisor
William Bergstresser, Vice Chairman, Wayne County at Large
Fred C. Schoenagel, Jr., Secretary, Representative at Large
Brian Schan, Treasurer, Wastewater Treatment Plants Representative
Coulby Dunn, Pike County at Large
Theodore Kostige, Wayne County Supervisor
Gerald Ehrhardt, Representative at Large
Mark Graziadio, Wayne County Commissioner
Harry Forbes, Pike County Commissioner
John Rowley, Pike County at Large
Samuel Kutz, Wayne County at Large
William Dewar, LWWA
Pete Snyder, Wayne County Conservation District
John Underwood, LWWA
John Senio, Lackawanna County at Large
Bernadine Lennon, Pike County Conservation District
Darryl Speicher, Monroe County Conservation District
Lester Soden, Representative at Large
Brad Wise, PPL, Inc. Representative

LWWMD District Administrator

Karen Mandeville

LWWMD Engineer/Watershed Consultant

F. X. Browne, Inc.

www.lwwmd.org

info@lwwmd.org